



SHARON QUATAERT
REALTY

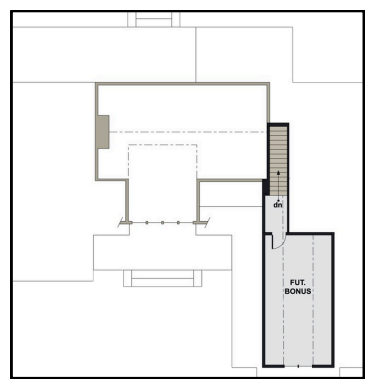
STONEWOOD ESTATES

STYLE MODEST FARMHOUSE

SIZE 2,136 SQUARE FEET



MAIN FLOOR
FLOORPLAN



OPTIONAL
BONUS ROOM
ABOVE GARAGE

PLAN OVERVIEW

Modern farmhouse with an option for a 300+ sq. ft. addition. An open floor plan, vaulted ceilings, and expansive outdoor space are just a few highlights!

- 3 Bedrooms
- 2.5 Bathrooms
- 1-2 Stories
- 2-3 Garage Spaces

DIRIENZO DRIVE | HILTON, NY 14468

CONTACT US

585.900.1111 | SHARON@SHARONQ.COM

STONEWOODSTATES.COM

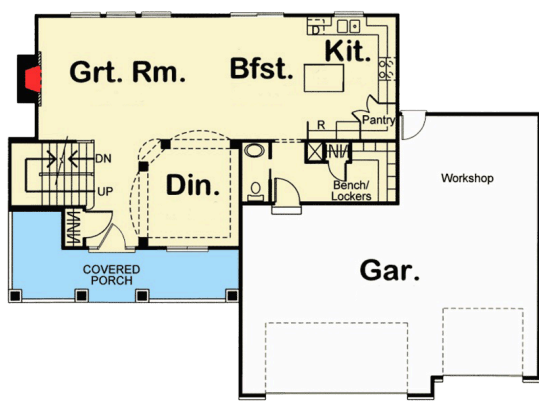


SHARON QUATAERT
REALTY

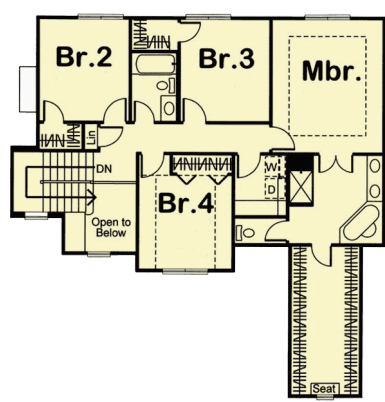
STONEWOOD ESTATES

STYLE NEW AMERICAN CRAFTSMAN

SIZE 2,177 SQUARE FEET



MAIN FLOOR
FLOORPLAN



SECOND FLOOR
FLOORPLAN

PLAN OVERVIEW

Open-concept first-floor with separated dining room. All the bedrooms are on the second floor, including a grand main suite with tray ceiling and large walk-in closet

- 4 Bedrooms
- 2.5 Bathrooms
- 2 Stories
- 3 Garage Spaces

DIRIENZO DRIVE | HILTON, NY 14468

CONTACT US

[585.900.1111](tel:585.900.1111) | SHARON@SHARONQ.COM

STONEWOODSTATES.COM

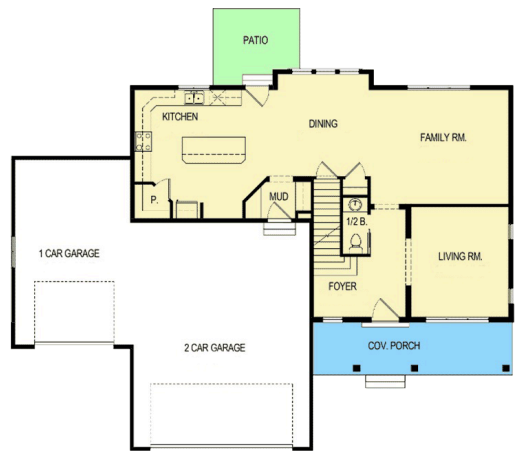


SHARON QUATAERT
REALTY

STONEWOOD ESTATES

STYLE NORTHWEST COLONIAL

SIZE 2,540 SQUARE FEET



MAIN FLOOR
FLOORPLAN



SECOND FLOOR
FLOORPLAN

PLAN OVERVIEW

This home features an inviting covered front porch and provides plenty of room to grow, with the option of a finished basement that includes 2 additional bedrooms and 1 more full bath.

- 4+ Bedrooms
- 2.5+ Bathrooms
- 2 Stories
- 3 Garage Spaces

DIRIENZO DRIVE | HILTON, NY 14468

CONTACT US

[585.900.1111](tel:585.900.1111) | SHARON@SHARONQ.COM

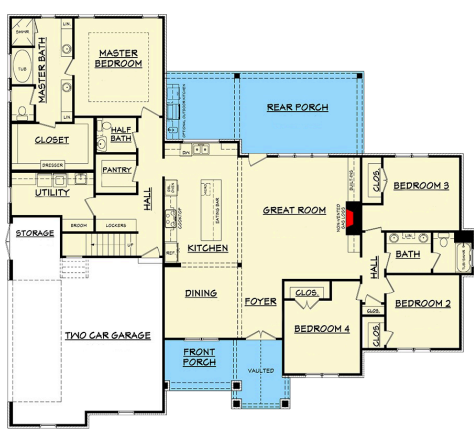
STONEWOODSTATES.COM



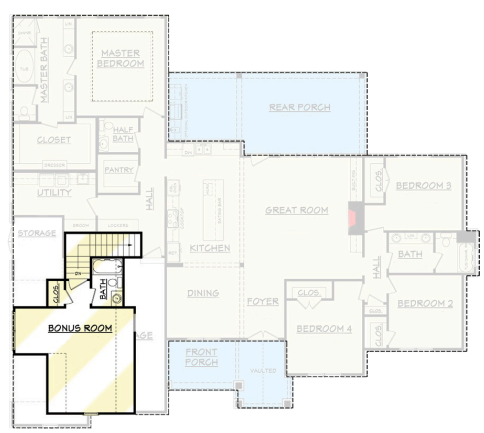
SHARON QUATAERT
REALTY

STONEWOOD ESTATES

STYLE OPEN CONCEPT CRAFTSMAN
SIZE 2,589 SQUARE FEET



MAIN FLOOR
FLOORPLAN



SECOND FLOOR
FLOORPLAN

PLAN OVERVIEW

This rustic craftsman offers raised ceilings, large windows, and a well-equipped kitchen. The option for a bonus space above the garage can add a 5th bedroom & 3rd full bath.

- 4+ Bedrooms
- 2.5+ Bathrooms
- 1-2 Stories
- 2 Garage Spaces

DIRIENZO DRIVE | HILTON, NY 14468

CONTACT US

> 585.900.1111 | SHARON@SHARONQ.COM

> STONEWOODSTATES.COM



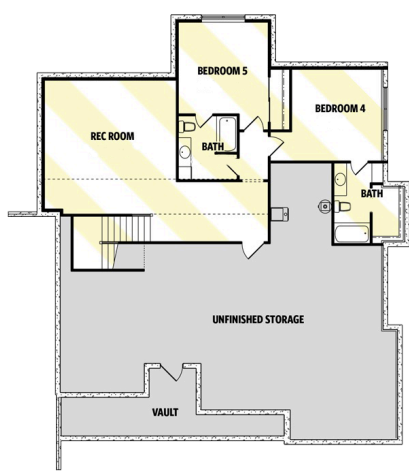
SHARON QUATAERT
REALTY

STONEWOOD ESTATES

STYLE	RUSTIC MOUNTAIN RANCH
SIZE	2,383 SQUARE FEET



MAIN FLOOR
FLOORPLAN



OPTIONAL BASEMENT
FLOORPLAN

PLAN OVERVIEW

This mountain style ranch offers rustic curb appeal with a simple flow inside and covered patio for outdoor living. An optional finished basement can provide 2 more bedrooms and bathrooms.

- 3+ Bedrooms
- 2.5+ Bathrooms
- 1 Stories
- 3 Garage Spaces

DIRIENZO DRIVE | HILTON, NY 14468

[CONTACT US](#)

[585.900.1111](tel:585.900.1111) | SHARON@SHARONQ.COM

STONEWOODSTATES.COM



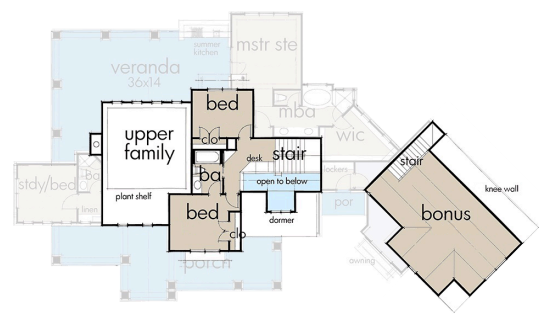
SHARON QUATAERT
REALTY

STONEWOOD ESTATES

STYLE FLEXIBLE FARMHOUSE
SIZE 2,396 SQUARE FEET



MAIN FLOOR FLOORPLAN



SECOND FLOOR FLOORPLAN

PLAN OVERVIEW

Best of both worlds with indoor and outdoor living. Wrap-around front and back porches, plus an outdoor kitchen. Inside is filled with extras and lots of flexibility on the second floor.

- 3+ Bedrooms
- 3 Bathrooms
- 2 Stories
- 2-3 Garage Spaces

DIRIENZO DRIVE | HILTON, NY 14468

CONTACT US

[585.900.1111](tel:585.900.1111) | SHARON@SHARONQ.COM

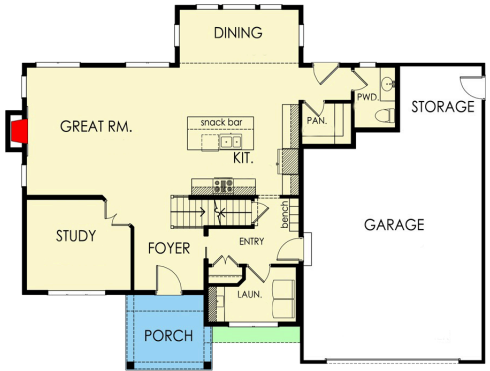
STONEWOODSTATES.COM



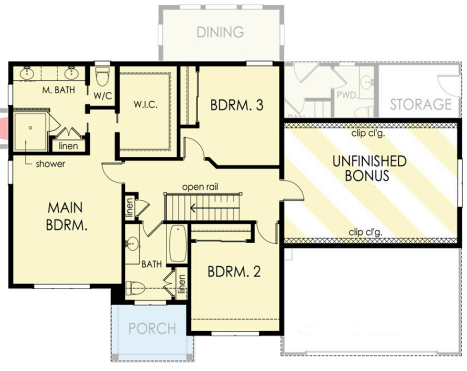
SHARON QUATAERT
REALTY

STONEWOOD ESTATES

STYLE EXCLUSIVE FARMHOUSE
SIZE 2,257 SQUARE FEET



MAIN FLOOR
FLOORPLAN



SECOND FLOOR
FLOORPLAN

PLAN OVERVIEW

Free-flowing living space combines the great room, kitchen, and dining areas and fills the rooms with light from oversized windows. Amenities are abundant in this home – including an upstairs bonus room.

- 3 Bedrooms
- 2.5 Bathrooms
- 2 Stories
- 2 Garage Spaces

DIRIENZO DRIVE | HILTON, NY 14468

CONTACT US



585.900.1111 | SHARON@SHARONQ.COM



STONEWOODSTATES.COM



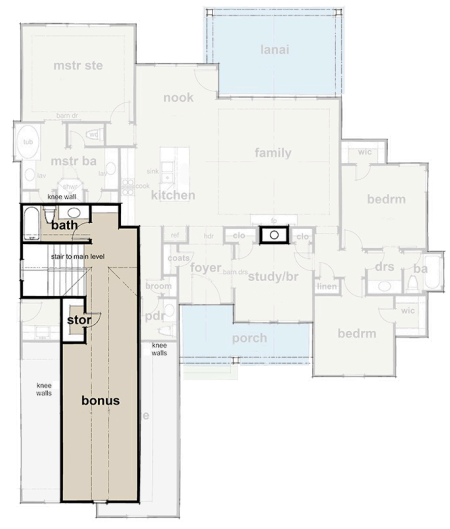
SHARON QUATAERT
REALTY

STONEWOOD ESTATES

STYLE MODERN FARMHOUSE
SIZE 1,965 SQUARE FEET



MAIN FLOOR
FLOORPLAN



SECOND FLOOR
FLOORPLAN

PLAN OVERVIEW

This modern farmhouse offers flexible bedroom space, 12' tray ceilings in the family room, walls of windows, and a large lanai. Plus a large island with a double sink and ample storage with a walk-in pantry.

- 3+ Bedrooms
- 2.5 Bathrooms
- 1 Stories
- 2 Garage Spaces

DIRIENZO DRIVE | HILTON, NY 14468

CONTACT US

585.900.1111 | SHARON@SHARONQ.COM

STONEWOODSTATES.COM

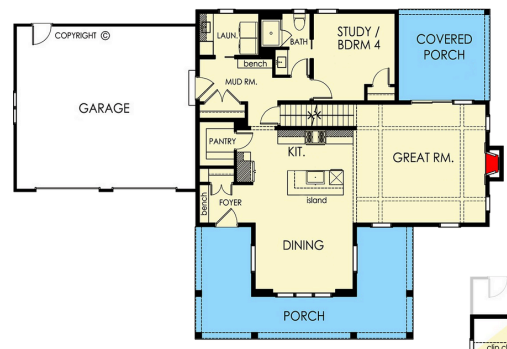


SHARON QUATAERT
REALTY

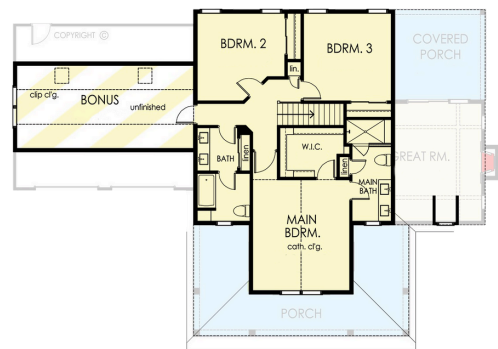
STONEWOOD ESTATES

STYLE TRADITIONAL COUNTRY HOME

SIZE 2,332 SQUARE FEET



MAIN FLOOR FLOORPLAN



SECOND FLOOR FLOORPLAN

PLAN OVERVIEW

Trendy and traditional exterior elevation with an open floor plan inside with a large kitchen, great room, and dining room. Loads of bonuses on the main floor with a large pantry, office, mudroom, and laundry.

- 3+ Bedrooms
- 3 Bathrooms
- 2 Stories
- 2 Garage Spaces

DIRENZO DRIVE | HILTON, NY 14468

CONTACT US

[585.900.1111](tel:585.900.1111) | SHARON@SHARONQ.COM

STONEWOODSTATES.COM